

Features

- ◇ Converts vacuum signal into pneumatic signal
- ◇ Different vacuum ranges are set by adjusting the screws on the valve.
- ◇ There are 2 different functional valves for option: normally open valve and normally closed valve.



How to order

ZVAB - NC

①

②

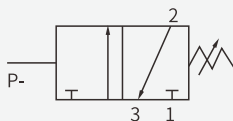
① Series	② Function	Connection thread
ZVAB	NC - Normally closed NO - Normally open	Default, G1/8 male thread

Technical parameters

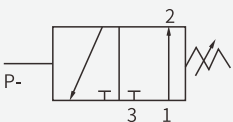
Model	Out-put function	Pressure (bar)	Signal range (-kPa)	Hysteresis (-kPa)	Temperature (°C)	Weight (g)
ZVAB-NC	NC	1.5-8	15-95	12	-10~60	44
ZVAB-NO	NO	1.5-8	10-95	3		

Symbol

NC (Normally closed)



NO (Normally open)



Dimensions (mm)

